



INSTALLATION TECHNOLOGIES

Vibralastic™ Isolation Mounts



ISO-9001 Certified

TABLE OF CONTENTS & CROSS-REFERENCE LIST

TABLE OF CONTENTS

Type of machine
Stationary installations:
Combustion engines, Pumps,
Compressors, Generators



P.4-5



P.6-7



P.8-9

Instruments and
Sensitive equipment:
Electronics, Cameras,
Fans, Pumps



P.8-9



P.3

Transit protection:
Computers, Test equipment,
Electrical cabinets



P.12



P.12



P.8-9

Building and construction:
Ductwork, Suspended
ceilings



P.12

Introduction: P.1
Conversion Tables P.2
World of Unisorb P.13

Motion control:
Rebound, Motion limitation



P.10-11

Mount Selection

Important information:

- Weight of equipment
- Number of mounting points
- Rotational speed
- Surrounding Environment

See corresponding product
data sheet.

VIBRALASTIC™ PART NUMBER CROSS-REFERENCE LIST

VIBRALASTIC™	NOVIBRA®
VA 100 40 M10	RA 100 A 10
VA 100 40 M12	RA 100 A 12
VA 100 60 M10	RA 100 B 10
VA 100 60 M12	RA 100 B 12
VA 200 40 M10	RA 40 A 10
VA 200 40 M12	RA 40 A 12
VA 200 60 M10	RA 200 B 10
VA 200 60 M12	RA 200 B M12
VA 350 40 M12	RA 350 A 12
VA 350 40 M16	RA 350 A 16
VA 350 60 M12	RA 350 B 12
VA 350 60 M16	RA 350 B 16
VA 500 40 M16	RA 500 A 16
VA 500 60 M16	RA 500 B 16
VA 800 40 M16	RA 800 A 16
VA 800 60 M16	RA 800 B 16
VA 1200 40 M20	RA 1200 A 20
VA 1200 60 M20	RA 1200 B 20
VA 1800 40 M20	RA 1800 A 20
VA 1800 60 M20	RA 1800 B 20
VA 2500 40 M24	N/A
VA 2500 60 M24	N/A

VIBRALASTIC™	NOVIBRA®
VB 50	ANB 50
VB 75	ANB 75
VB 100	ANB 100
VB 200	ANB 200
VE 40 40 M10	RA 40 EM A 10
VE 40 60 M10	RA 40 EM B 10
VE 60 40 M12	RA 60 EM A 12
VE 60 60 M12	RA 60 EM B 10
VE 125 40 M10	RA 125 EM A 10
VE 125 40 M12	RA 125 EM A 12
VE 125 60 M10	RA 125 EM B 10
VE 125 60 M12	RA 125 EM B 12
VE 350 40 M12	RA 350 EM A 12
VE 350 40 M16	RA 350 EM A 16
VE 350 60 M12	RA 350 EM B 16
VE 350 60 M16	RA 350 EM B 16
VE 800 40 M16	RA 800 EM A 16
VE 800 60 M16	RA 800 EM B 16
VE 1500 40 M20	RA 1500 EM A 20
VE 1500 60 M20	RA 1500 EM B 20
VE 2500 40 M24	RA 2500 EM A 24
VE 2500 60 M24	RA 2500 EM B 24

VIBRALASTIC™	NOVIBRA®
VM 7 40 M6	M 7 A
VM 7 60 M6	M 7 B
VM 25 40 M8	M 25 A
VM 25 60 M8	M 25 B
VM 50 40 M10	M 50 A
VM 50 60 M10	M 50 B
VM 100 40 M10	M 100 A
VM 100 60 M10	M 100 B
VM 200 40 M10	M 200 A
VM 200 60 M10	M 200 B
VM 400 40 M12	M 400 A
VM 400 60 M12	M 400 B
VM 600 40 M16	M 600 A
VM 600 60 M16	M 600 B
VAB-0 M10	N/A
VAB-0 M12	RAB-0 12
VAB-2 M10	N/A
VAB-2 M12	RAB-2 12
VAB-3 M10	N/A
VAB-3 M12	RAB-3 12
V-TO 40	VT-OVER A
V-TO 60	VT-OVER B
V-BU 40	VT-UNDER A
V-BU 60	VT-UNDER B

CONVERSION TABLES

<u>FORCE</u>		
N (Newton)	kp (Kilopond)	lbs (Pound-force)
1	0.101972	0.224809
9.80665	1	2.20462
4.44822	0.453592	1

<u>PRESSURE</u>		
PA (Pascal)=(n/m²)	kp/cm²	lbs/in² =(psi)
1	10.1972 x 10 ⁻⁶	0.145038 x 10 ⁻³
98066.5	1	14.2233
6894.76	70.307 x 10 ⁻³	1

<u>ENERGY AND TORQUE</u>		
Nm (Newtonmeter)	kpm	lbf x ft
1	0.101972	0.737562
9.80665	1	7.23301
1.35582	0.138255	1

<u>FREQUENCY</u>
1 Hz (Hertz) = 60 rpm



INSTALLATION TECHNOLOGIES

www.unisorb.com

BOX 1000, JACKSON, MI 49204-1000
888-4-UNISORB • FAX 517-764-5607

ISO-9001:2000 Certified



VIBRALASTIC™ TYPE VAB MOUNTS

INSTALLATION TECHNOLOGIES

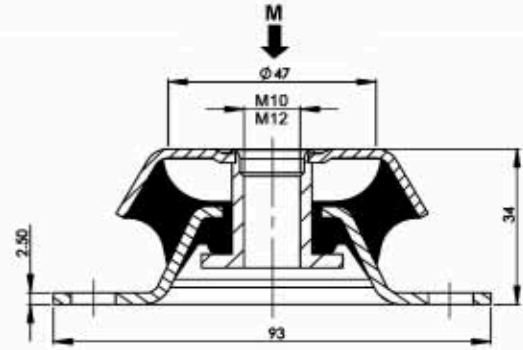
Bulletin No.
GB-0160-1.1
1/24/11



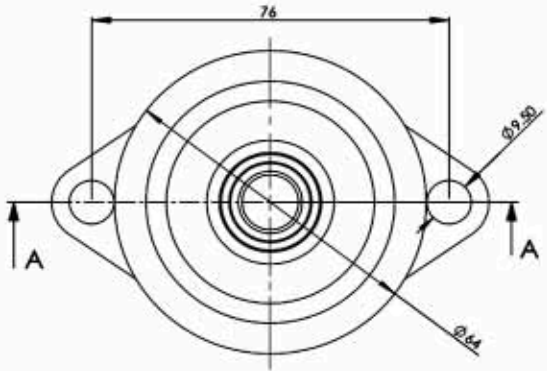
For effective isolation of noise and vibration on various machines with rotating movements.

- Combustion engines
- Diesel engines
- Emergency power packs
- Marine gensets
- Pumps
- Industrial gensets

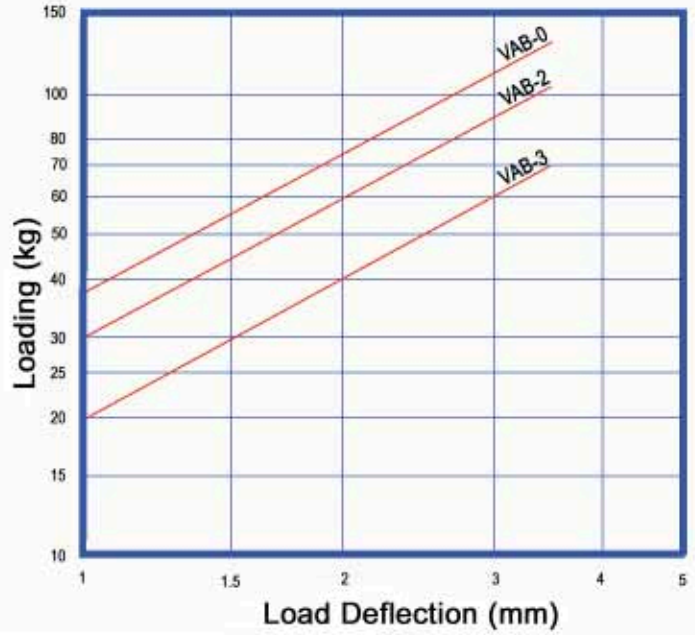
Vibralastic Type VAB



SECTION A-A



MOUNT NUMBER	M Max. Load (kg.)	Weight (kg)
VAB-0 M10	130	0.23
VAB-0 M12	130	0.23
VAB-2 M10	105	0.23
VAB-2 M12	105	0.23
VAB-3 M10	70	0.23
VAB-3 M12	70	0.23



INSTALLATION TECHNOLOGIES
www.unisorb.com
 BOX 1000, JACKSON, MI 49204-1000
 888-4-UNISORB • FAX 517-764-5607
 ISO-9001:2000 Certified

VIBRALASTIC[™] TYPE VA MOUNTS

INSTALLATION TECHNOLOGIES

For effective isolation of vibration and noise on machines with rotating elements.

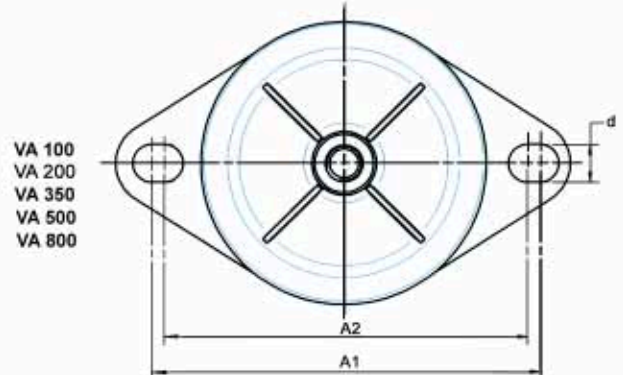
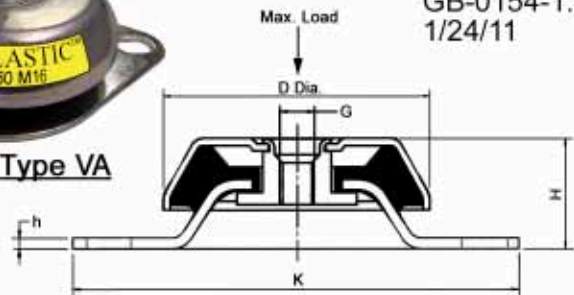
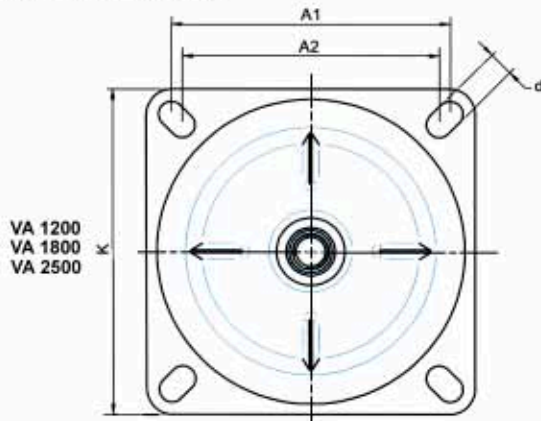
- Compressors
 - Combustion Engines
 - Generators
 - Converters
- Pumps
 - Industrial and marine gensets
 - Fans

Also suitable for use with presses, punches and other workshop machines.



Vibralastic Type VA

Bulletin No.
GB-0154-1.1
1/24/11

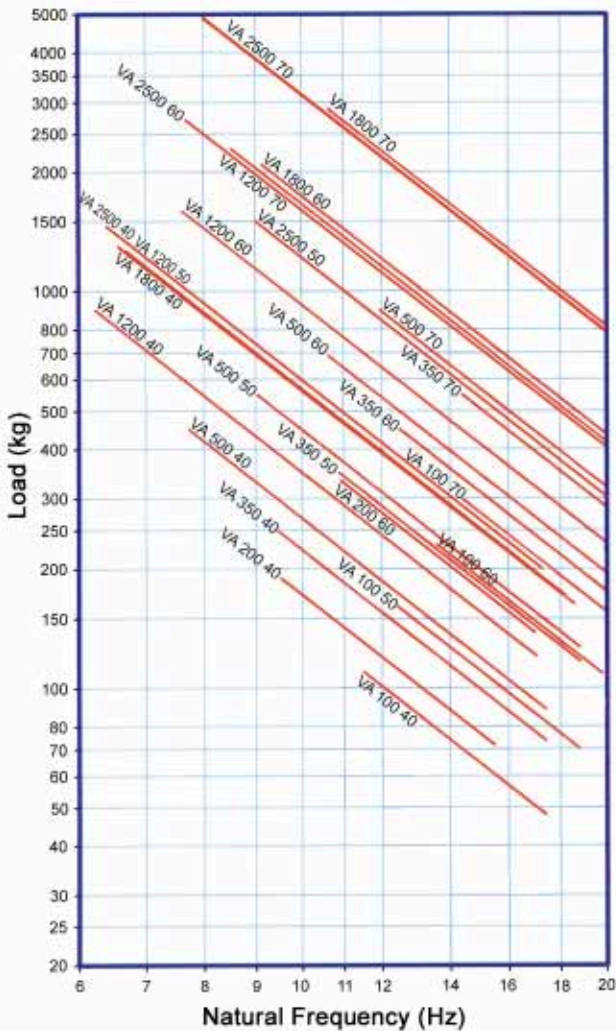


MOUNT NUMBER	A1	A2	D	G	H	K	d	h	Weight	Max. Load
VA 100 40 M10	116	106	79	M10	30	130	9	3	0.40	110
VA 100 40 M12	116	106	79	M12	30	130	9	3	0.40	110
VA 100 60 M10	116	106	79	M10	30	130	9	3	0.40	231
VA 100 60 M12	116	106	79	M12	30	130	9	3	0.40	231
VA 200 40 M10	128	117	94	M10	35	150	10	3	0.47	180
VA 200 40 M12	128	117	94	M12	35	150	10	3	0.47	180
VA 200 60 M10	128	117	94	M10	35	150	10	3	0.47	280
VA 200 60 M12	128	117	94	M12	35	150	10	3	0.47	280
VA 350 40 M12	146	133	106	M12	37	170	12.5	3.5	0.78	250
VA 350 40 M16	146	133	106	M16	37	170	12.5	3.5	0.78	250
VA 350 60 M12	146	133	106	M12	37	170	12.5	3.5	0.78	450
VA 350 60 M16	146	133	106	M16	37	170	12.5	3.5	0.78	450
VA 500 40 M16	164	150	124	M16	43	192	14	3.5	1.02	450
VA 500 60 M16	164	150	124	M16	43	192	14	3.5	1.02	690
VA 800 40 M16	188	176	145	M16	49	218	14.5	4	1.85	750
VA 800 60 M16	188	176	145	M16	49	218	14.5	4	1.85	1300
VA 1200 40 M20	140	140	161	M20	58	170	14.5	4	2.19	900
VA 1200 60 M20	140	140	161	M20	58	170	14.5	4	2.19	1600
VA 1800 40 M20	163	149	180	M20	66	192	14.5	4	3.25	1300
VA 1800 60 M20	163	149	180	M20	66	192	14.5	4	3.25	2100
VA 2500 40 M24	180	180	220	M24	105	220	17.5	6	7.40	1800
VA 2500 60 M24	180	180	220	M24	105	220	17.5	6	7.40	4100

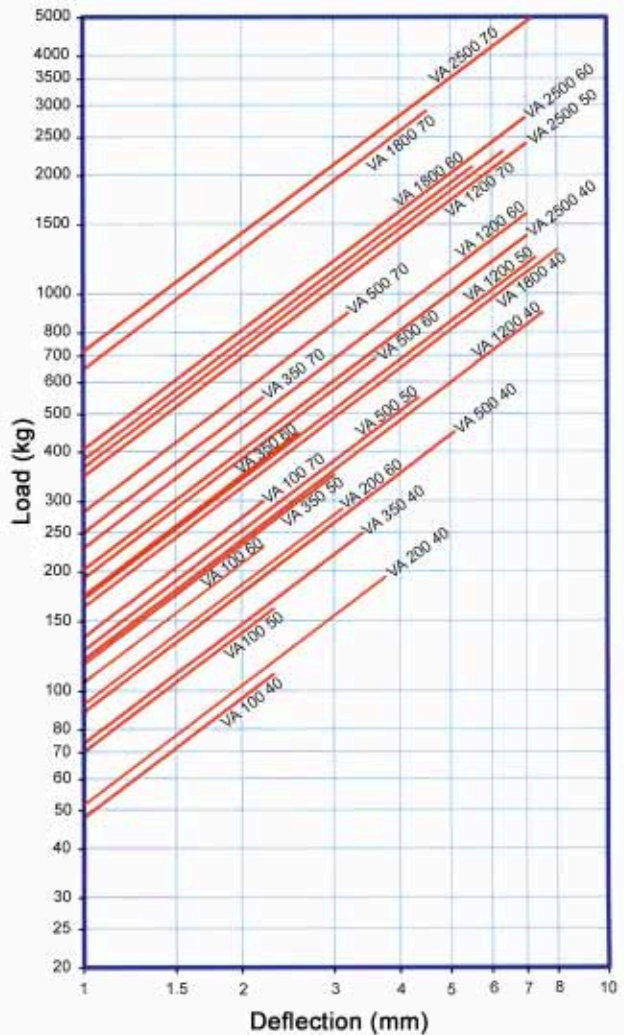
Dimensions are in millimeters. Weights and loads are in kilograms.
Other durometers are available. Contact Unisorb Engineering.

VIBRALASTIC™ TYPE VA MOUNTS

NATURAL FREQUENCY (Hz)



LOAD DEFLECTION (mm)



INSTALLATION TECHNOLOGIES
www.unisorb.com
 BOX 1000, JACKSON, MI 49204-1000
 888-4-UNISORB • FAX 517-764-5607
 ISO-9001:2000 Certified

VIBRALASTIC[™] TYPE VE MOUNTS

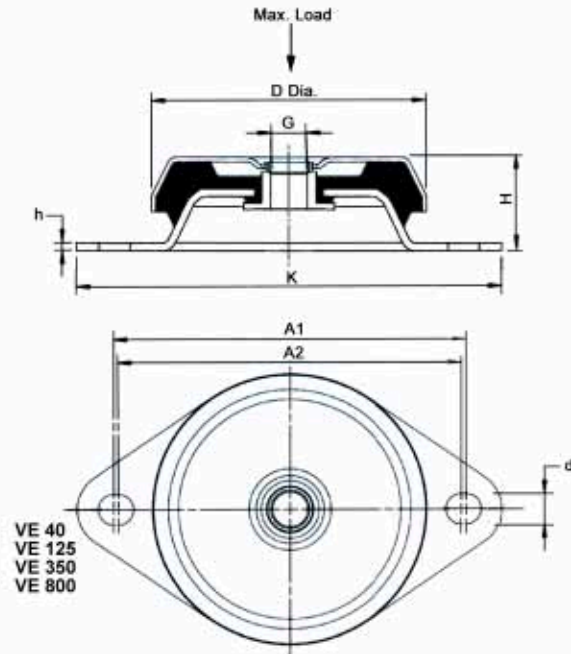
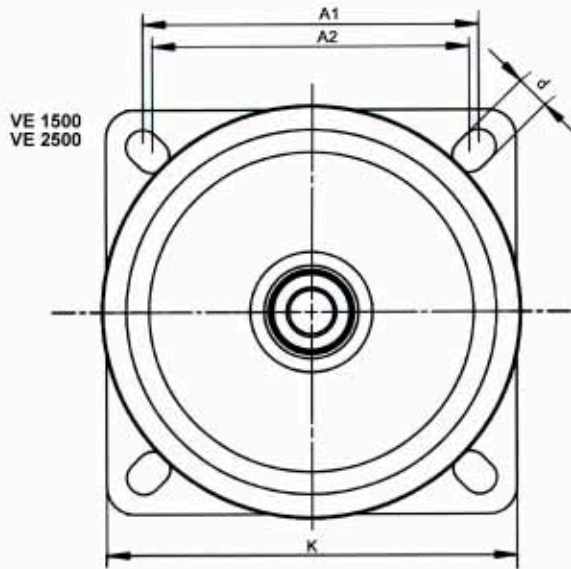
Bulletin No.
GB-0155-1.1
1/24/11

For effective isolation of vibration and noise on machines with rotating elements.

- Compressors
- AC units
- Industrial fans
- Generators
- Emergency power sets
- Large milling machinery
- Industrial and marine gensets
- Refiners
- Defibrators



Vibralastic Type VE

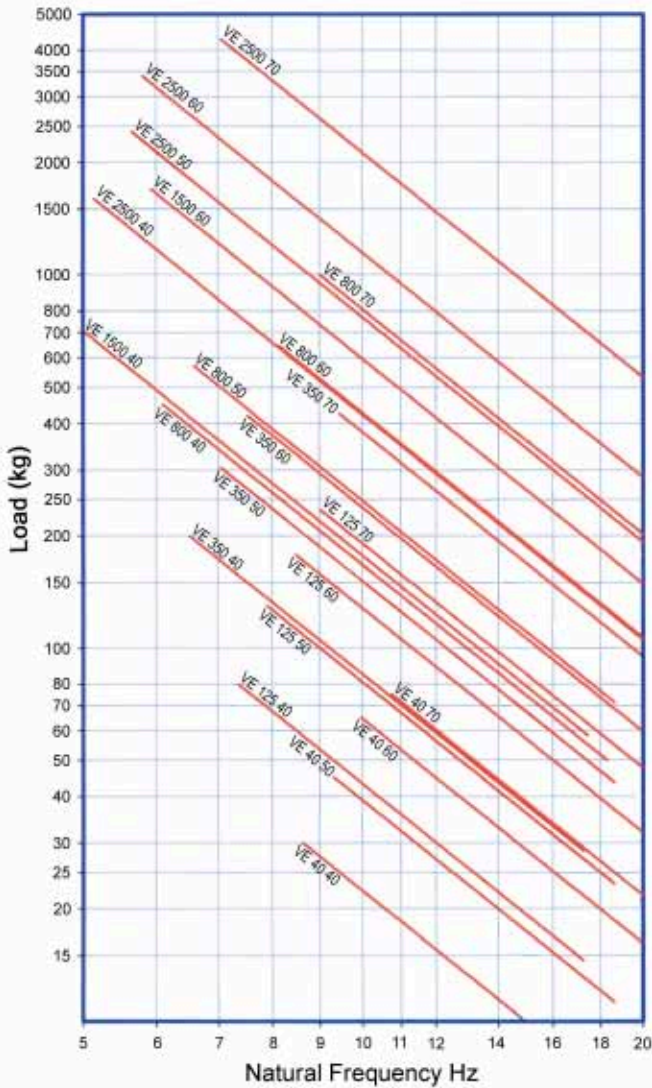


MOUNT NUMBER	A1	A2	D	G	H	K	d	h	Weight	Max. Load
VE 40 40 M10	91	73	64	M10	35	110	9	2.5	0.23	30
VE 40 60 M10	91	73	64	M10	35	110	9	2.5	0.23	65
VE 125 40 M10	116	104	83	M10	35	130	9	3	0.40	80
VE 125 40 M12	116	104	83	M12	35	130	9	3	0.40	80
VE 125 60 M10	116	104	83	M10	35	130	9	3	0.40	175
VE 125 60 M12	116	104	83	M12	35	130	9	3	0.40	175
VE 350 40 M12	146	133	106	M12	41	170	12.5	3.5	0.86	200
VE 350 40 M16	146	133	106	M16	41	170	12.5	3.0	0.86	200
VE 350 60 M12	146	133	106	M12	41	170	12.5	3.5	0.86	420
VE 350 60 M16	146	133	106	M16	41	170	12.5	3.0	0.86	420
VE 800 40 M16	188	176	150	M16	53.5	218	14.5	4	1.84	450
VE 800 60 M16	188	176	150	M16	53.5	218	14.5	4	1.84	800
VE 1500 40 M20	146	146	183	M20	86	180	14.5	5	3.10	875
VE 1500 60 M20	146	146	183	M20	86	180	14.5	5	3.10	1700
VE 2500 40 M24	180	180	220	M24	105	220	17.5	6	6.72	1600
VE 2500 60 M24	180	180	220	M24	105	220	17.5	6	6.72	3400

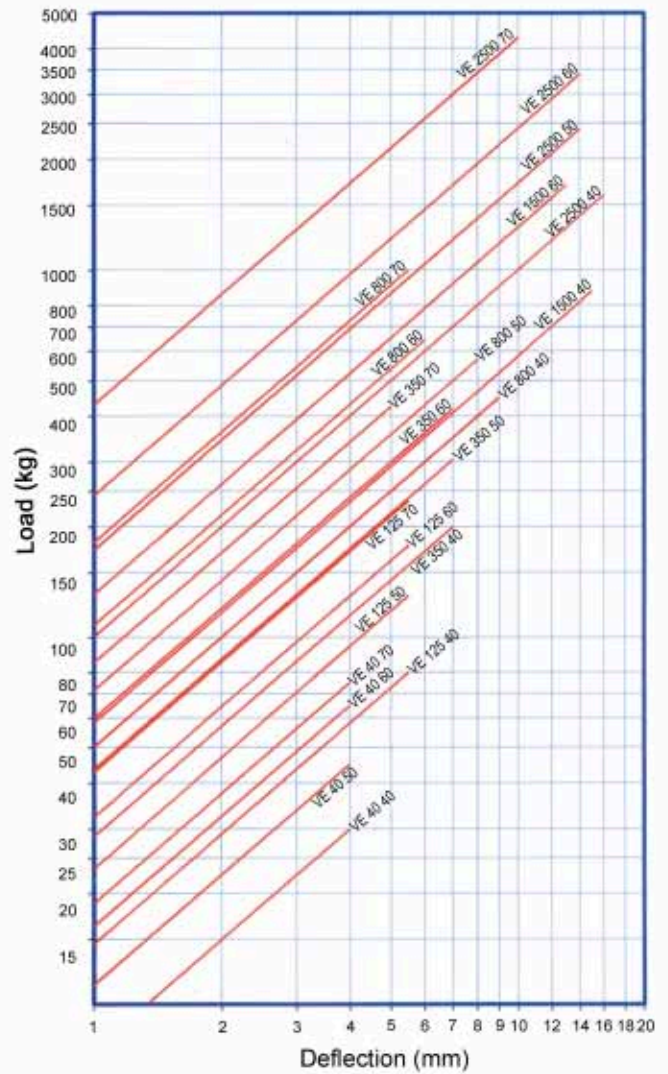
Dimensions are in millimeters. Weights and loads are in kilograms.
Other durometers are available. Contact Unisorb Engineering.

VIBRALASTIC™ TYPE VE MOUNTS

NATURAL FREQUENCY Hz



LOAD DEFLECTION (mm)



INSTALLATION TECHNOLOGIES

www.unisorb.com

BOX 1000, JACKSON, MI 49204-1000

888-4-UNISORB • FAX 517-764-5607

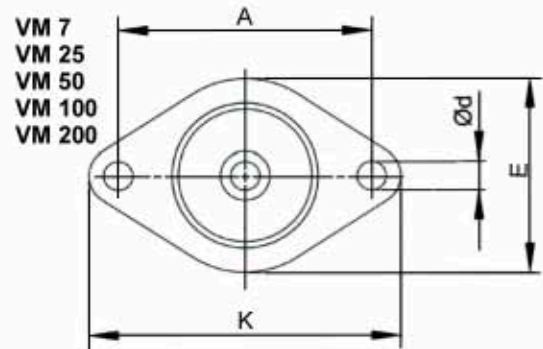
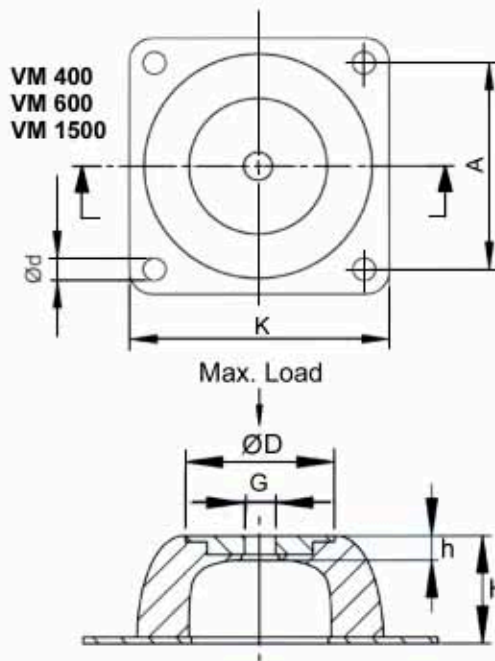
ISO-9001:2000 Certified

Vibralastic Type VM Mounts are designed for applications with low frequency vibrations. They are also excellent for shock attenuation because they offer large deflection capability. These mounts offer passive vibration isolation for measuring equipment, test cells and electronic instruments.

Type VM Mounts are designed to provide a large degree of deflection at low loads. Even though this mount design provides high amount of deflection, it is compact, light weight, and features easy installation.

Typical applications are as follows:

- Fans
 - Electric motors
 - Packaging applications
 - Compressors
 - AC units
 - Weighing scales
 - Vibratory screens
 - Measuring equipment
- Pumps
 - Test cell equipment
 - Ventilators
 - Refrigeration units
 - Powder handling machinery
 - Noise control units
 - Food processing equipment
 - Electronic instruments



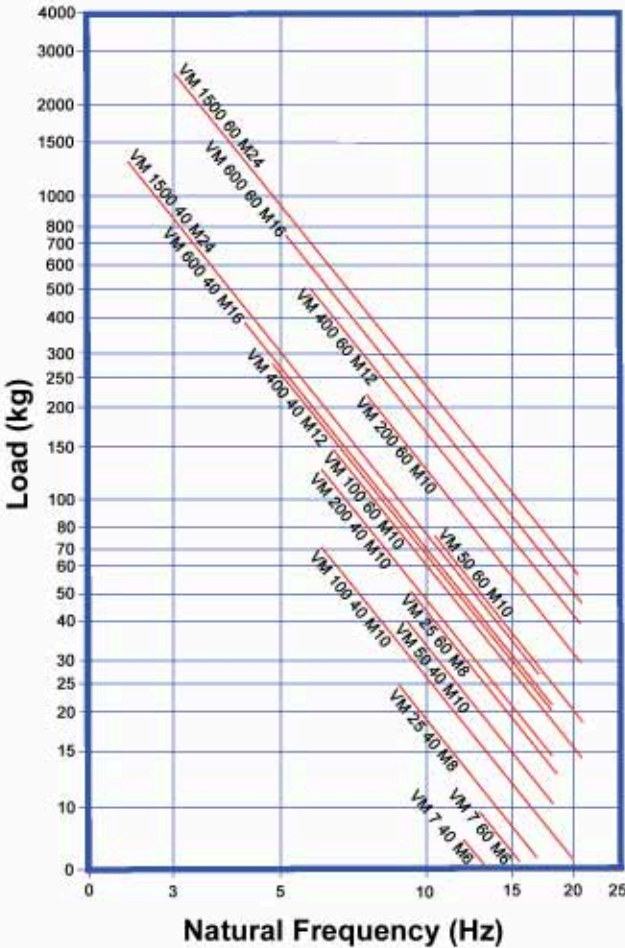
Vibralastic Type VM

TYPE	D	E	A	K	H	h	d	G	MAX. LOAD 40 D.	MAX. LOAD 60 D.	WEIGHT
VM 7	18	43	50	64	20	7	7.0	M6	3.5	9	0.020
VM 25	27	56	66	85	25	11	8.0	M8	25	50	0.070
VM 50	40	76	92	114	35	14	10.0	M10	40	80	0.160
VM 100	44	96	110	136	40	15	11.5	M10	70	150	0.260
VM 200	54	101	124	151	45	13	11.5	M10	130	220	0.420
VM 400	78	-	120	150	63	18	14.5	M12	280	500	1.060
VM 600	100	-	160	200	85	25	14.5	M16	380	750	2.350
VM 1500	186	-	250	310	160	43	18.0	M24	1400	2500	9.430

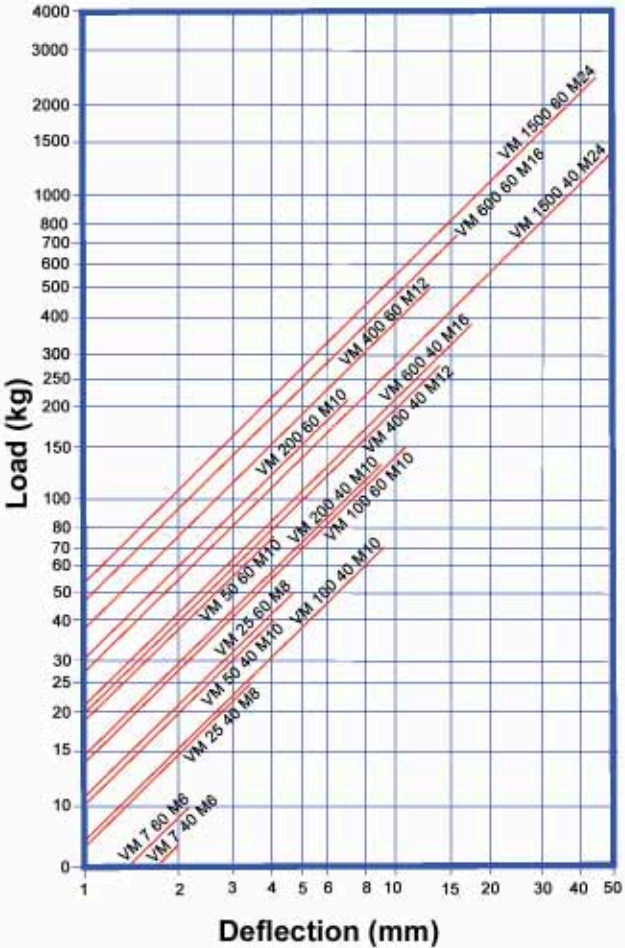
Dimensions are in millimeters. Weights and loads are in kilograms.

VIBRALASTIC™ TYPE VM MOUNTS

NATURAL FREQUENCY (HZ)



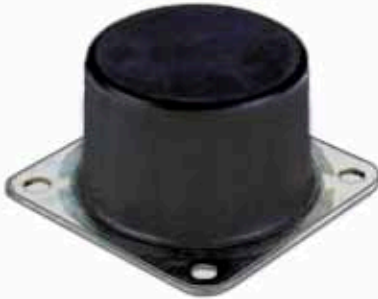
LOAD DEFLECTION (MM)



INSTALLATION TECHNOLOGIES
www.unisorb.com
 BOX 1000, JACKSON, MI 49204-1000
 888-4-UNISORB • FAX 517-764-5607
 ISO-9001:2000 Certified

VIBRALASTIC™ TYPE VB MOUNTS

Bulletin No.
GB-0158-1.1
1/24/11



Vibralastic Type VB Bumper

This product is used to safely and effectively limit movement of equipment components.

Typical applications could include:

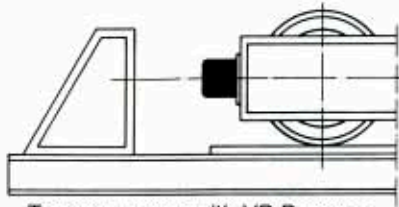
- Working beams
- Falling objects
- Forestry vehicles
- Material handling equipment
- Traversing cranes
- Cabinets
- Wagons
- Lifting cranes

Features:

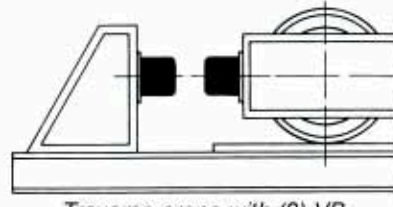
Bumper consists of a cylindrical rubber body which is bonded to a square shaped steel baseplate. All four corners of the baseplate contain a mounting hole.

A special high memory rubber is used to assure as much energy absorption as possible. The volume of the rubber is used at optimum efficiency.

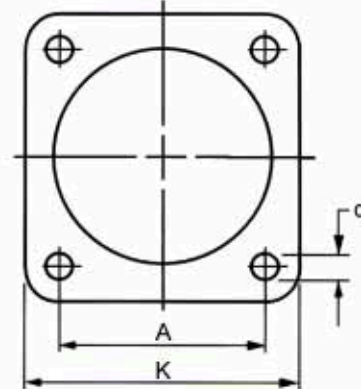
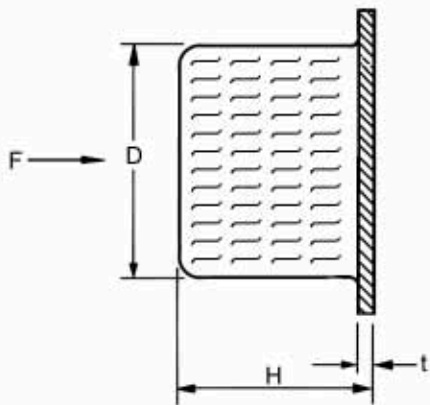
For new equipment designs simpler and lighter calculated forces can be considered, thus achieving a lower cost installation.



Traverse crane with VB Bumper



Traverse crane with (2) VB Bumpers mounted in series



TYPE	A	D	d	H	K	t	WEIGHT	F MAX. (N)
VB 50	50	50	7	43	70	3	0.2	8000
VB 75	75	75	9	63	100	3	0.5	20000
VB 100	100	100	11	84	130	4	1.2	41000
VB 200	200	200	13.5	168	240	8	9.1	180000

Dimensions are in millimeters. Weights are in kilograms.

VIBRALASTIC™ TYPE VB MOUNTS

APPLICATION FORMULAS

$$E = \frac{m \cdot v^2}{2} \quad (1)$$

$$E = F \cdot s \quad (2)$$

$$F = m \cdot a \quad (3)$$

$$s = \frac{a \cdot t^2}{2} \quad (4)$$

$$v = \sqrt{a \cdot t} \quad (5)$$

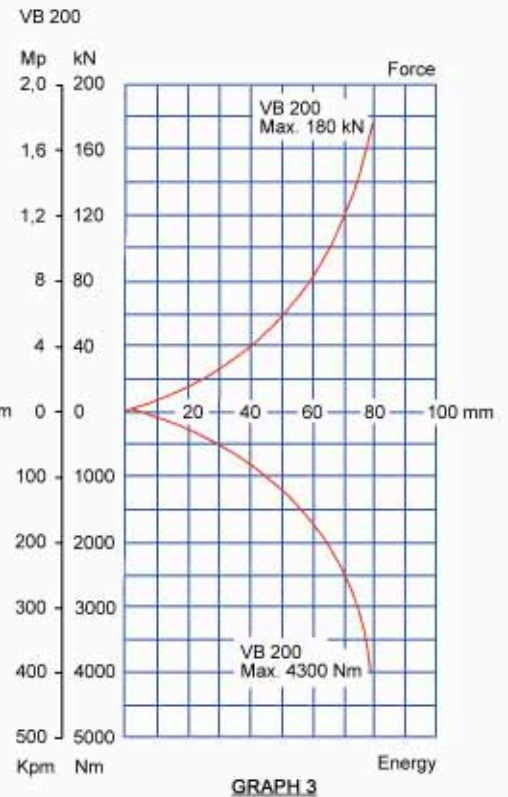
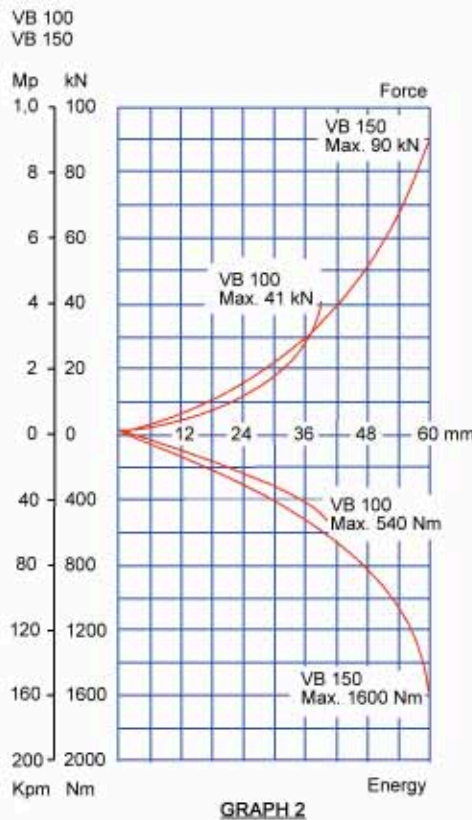
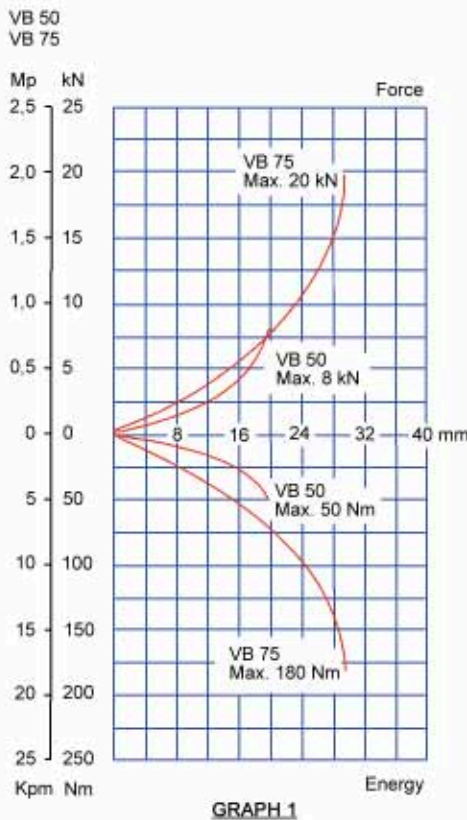
$$v = \sqrt{2 \cdot a \cdot s} \quad (6)$$

$$v = \sqrt{2 \cdot g \cdot h} \quad (7) \text{ applicable in free fall}$$

Equations (4) thru (7) are applicable for initial velocity = 0

E = energy in Nm
 m = mass in kilograms
 v = velocity in meters/second (m/s)
 F = force in Newtons
 s = distance in meters
 a = acceleration in m/s²
 t = time in seconds
 g = acceleration due to gravity 9.81 m/s²
 h = height in meters
 d = spring travel in meters

Mp = mega pascals
 kN = kilo newtons
 Kpm = kilo pascal meters
 Nm = newton meters
 mm = millimeters



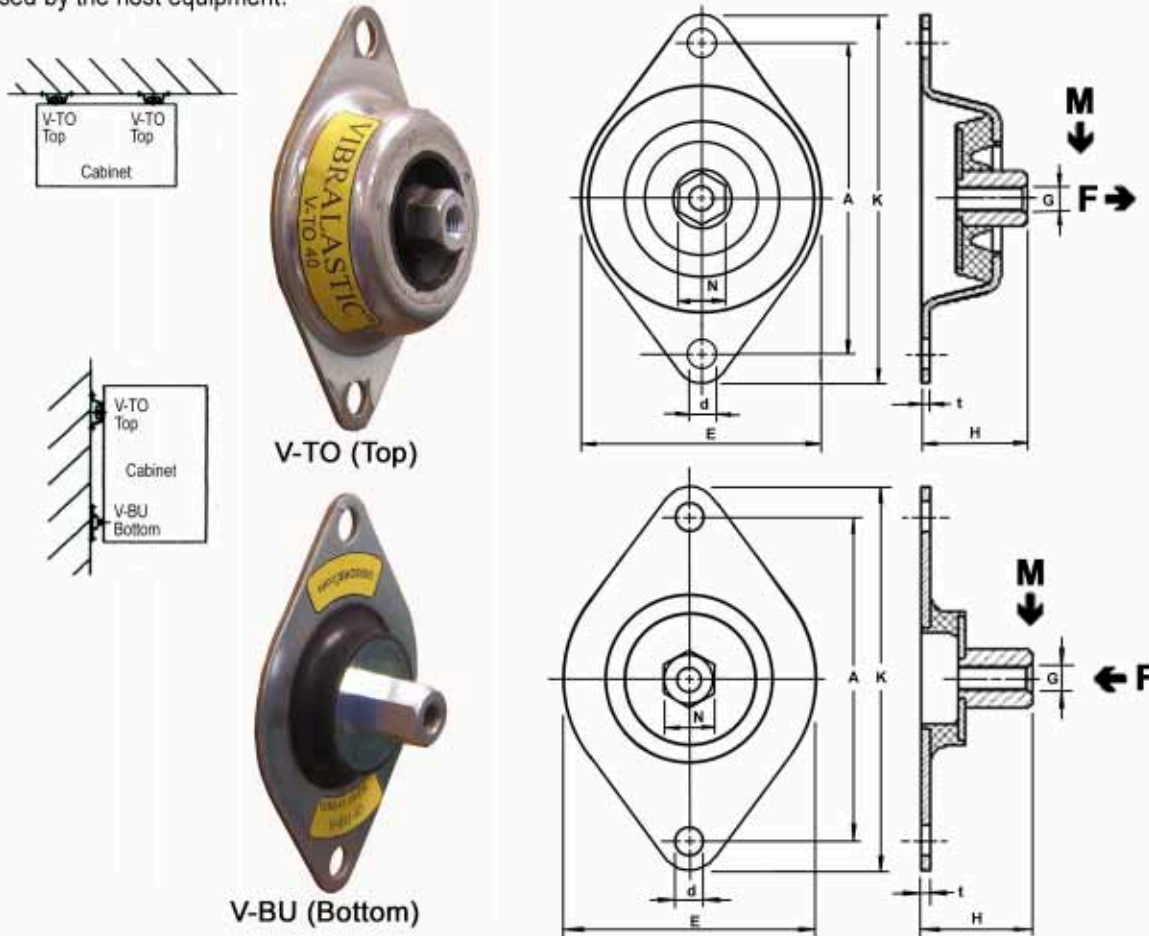
INSTALLATION TECHNOLOGIES
www.unisorb.com
 BOX 1000, JACKSON, MI 49204-1000
 888-4-UNISORB • FAX 517-764-5607
 ISO-9001:2000 Certified

VIBRALASTIC[™] TYPE V-T/B MOUNTS

INSTALLATION TECHNOLOGIES

Bulletin No.
GB-0157-1.1
1/24/11

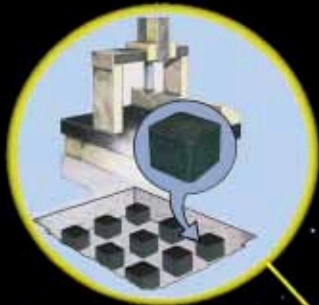
These mounts are designed to be mounted vertically in such a way that the rubber section is subjected to shear loads, providing high deflection even at low loading. They come in two components. The V-TO top mount provides protection against tension, preventing the isolated unit from falling down in case of overloading. The Top mounts can also be used to hang a box or cabinet from above by using (4) V-TO Top mounts. The V-BU bottom mount accepts horizontal compression loads and allows vertical shear deflection. These mounts are perfect for mounting electrical cabinets and other similar units to machinery, thus isolating them from harmful vibrations caused by the host equipment.



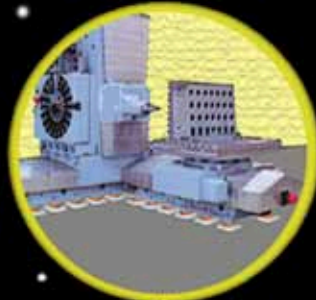
MOUNT NUMBER	A	d	E	G	H	K	N	t	M-Max Load (kg)		F-Max Load (kg)	
									40 D.	60 D.	40 D.	60 D.
V-TO 40 TOP	96	9	75	M8	33	114	15	1.5	14	—	30	—
V-TO 60 TOP	96	9	75	M8	33	114	15	1.5	—	25	—	70
V-BU 40 BOTTOM	96	9	75	M8	33	114	15	1.5	14	—	30	—
V-BU 60 BOTTOM	96	9	75	M8	33	114	15	1.5	—	25	—	70

Dimensions are in millimeters.

THE WORLD OF UNISORB



Foundation Isolation Systems



Horizontal Boring Mill



Press



Medical Equipment



Professional Engineering Services



Injection Molding Machine



Advanced Grouting Techniques



General Purpose Mounting



Turbine Generator

**ADVANCING MACHINERY
INSTALLATION TECHNOLOGY**

For design assistance Contact UNISORB engineering at 888-4-UNISORB (888-486-4767), FAX 517-764-5607, or e-mail us at unisorb@unisorb.com. Also, please visit our web site at www.unisorb.com.

Machine Installation Expertise Since 1935

Since 1935 UNISORB has been serving the machinery installation needs of all segments of the manufacturing industry. As a part of our commitment to provide the best installation products and services, UNISORB maintains the only industry staff of engineers devoted exclusively to the design and implementation of complete machinery installation systems. From concept to final installation, UNISORB ensures optimum performance of mounted equipment.



Depend on UNISORB's years of experience for:

- *Machinery Mounts*
- *Vibration Isolation Systems*
- *Anchoring/Alignment Systems*
- *Vibration Analysis Services*
- *Professional Engineering Services*
- *Isolated Foundation Design*
- *Advanced Grouting Technologies*

UNISORB®
INSTALLATION TECHNOLOGIES
www.unisorb.com
BOX 1000, JACKSON, MI 49204-1000
888-4-UNISORB FAX 517-764-5607
ISO-9001 Certified